



E-mail:
fscimkp@ku.ac.th

Zoology@SciKU

Research Areas of Interest

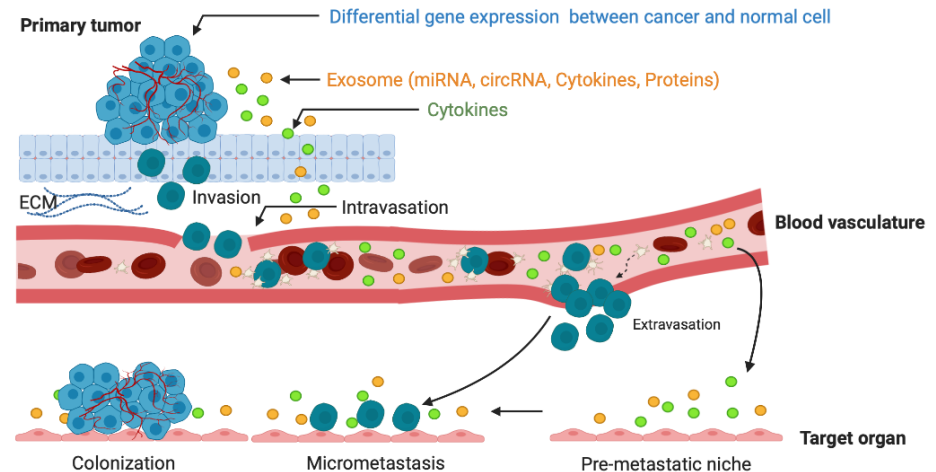
1. Cancer progression and metastasis mechanism
2. Function of non-coding RNA on cancer progression
3. Biosensors and test kit development

Research Clusters

- Medical Science and Health

Research Collaborations/Industrial Partners

- Faculty of Medicine, Chulalongkorn University



Metastasis remains a major cause of death from solid tumors. Understanding of critical mechanisms regulating metastasis holds a promise to improve prognosis of patients and overcome cancer diseases in the future. Metastasis is highly complex process including multi-step cascade. To fully understand this process, interactions between cancer cells and stromal environments are critically important as well as genetic characterizations of cancer cells. To address this issue, we have combined traditional biological approaches with noninvasive imaging, unique animal models and bioinformatics.